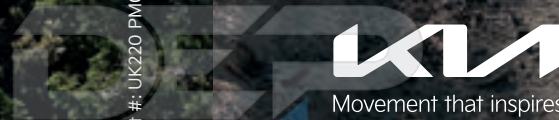




THE 2022 SORENTO.
FOR EVERY ADVENTURE.



Movement that inspires



Movement that inspires

Part #: UK220 PM001

DEALER PROCESS



WHEREVER YOU GO, GO ALL THE WAY.

The way we see it, no one ever said, give it a bit. No one ever said, give it less. The world was not built by half-measures, or the half-hearted. So, here's to going all in, and all out. Embracing all that's possible, now and tomorrow. With more heart, more vision, and more purpose. Whether you're building a car, or building a life. For those who share this relentless spirit, we created the 2022 Sorento. Built to help you master whatever the day brings.



Cover and this page: SX PRESTIGE WITH X-LINE AWD PACKAGE SHOWN

Aftermarket all-terrain tires (sold separately) are recommended for off-road conditions. Aftermarket accessories sold separately. Always check the depth of water before crossing. Always drive safely. All cargo should be properly secured and evenly distributed. Always use caution when carrying rooftop accessories. See kiaaccessoryguide.com for details.



THE WORLD'S FIRST STORYTELLING MACHINE.

SEEK A NEW DIRECTION. TAKE THE PATH LESS TRAVELED. CHASE EVERY ADVENTURE WITH ALL YOU'VE GOT. WE GAVE THE 2022 SORENTO LINEUP A RANGE OF POWERFUL ENGINES, BOLD LOOKS, AND PLENTY OF GRIT TO LET YOU CONQUER THE DAY YOUR OWN WAY, AND COME HOME WITH EPIC STORIES TO TELL.

INDUSTRY-LEADING WARRANTY PROGRAM¹

10-YEAR/100,000-MILE LIMITED POWERTRAIN WARRANTY

5-YEAR/60,000-MILE LIMITED BASIC WARRANTY

5-YEAR/100,000-MILE LIMITED ANTI-PERFORATION WARRANTY

5-YEAR/60,000-MILE 24-HOUR ROADSIDE ASSISTANCE



THE POWERFUL TURBO-HYBRID

combines serious performance and versatility with impressive efficiency,² courtesy of an advanced, 227-hp turbocharged hybrid powertrain, available torque-vectoring all-wheel drive,³ and 19-inch wheels — along with plenty of seating and cargo space

THE RUGGED X-LINE

is an available AWD trim* that features standard torque-vectoring all-wheel drive with Center Locking Differential and increased ground clearance for bring-it-on capability — plus unique wheels and matte black trim to match its commanding nature

THE DYNAMIC SX-LINE

revs up any urban adventure with a standard 2.5L turbocharged engine that delivers 281 hp and 311 lb.-ft. of torque, to back up its striking exterior styling featuring a gloss black finish on the grille, trim accents, and 20-inch wheels

THE NEW TURBO PLUG-IN HYBRID

does it all, with a powerful turbocharged plug-in hybrid (PHEV) powertrain, 32 miles of all-electric range,³ and standard all-wheel-drive capability¹ — plus advanced technology, a sophisticated interior design, and the most passenger space of any three-row plug-in hybrid⁴

HYBRID EX, SX PRESTIGE WITH X-LINE AWD PACKAGE, SX PRESTIGE, PHEV SX PRESTIGE SHOWN

¹Optional feature available only on certain trims. See Features page for availability. ²No system, no matter how advanced, can compensate for all driver errors and/or driving conditions. Always drive safely. 1-4 See inside back cover for endnotes.

2.5L TURBO

GASOLINE DIRECT INJECTION ENGINE*

DRIVE MODE SELECT

311 LB.-FT.

OF TORQUE WITH 281 HP

20" ALLOY WHEELS*

8-SPEED

DUAL-CLUTCH TRANSMISSION*



Sorento is engineered for confident, dynamic performance. An available 2.5L turbocharged* engine unleashes 281 hp and 311 lb.-ft. of torque to power you through the city or far beyond. Additional drive-enhancing features include an available 8-speed Dual-Clutch Transmission* for smooth acceleration and quick shifting. Plus a standard Drive Mode Select system that lets you adjust the drive characteristics, such as throttle response, steering weight, and shift points, to match your adventure.

DEP
DEALER ePROCURE

*Optional feature available only on certain trims. See Features page for availability. SX PRESTIGE SHOWN

WEATHER-PROOF YOUR PLANS.

SORENTO HAS THE CAPABILITY TO TACKLE A RANGE OF CONDITIONS, SO YOU CAN HIT THE ROAD ON YOUR OWN TERMS — NOT MOTHER NATURE'S.

TORQUE-VECTORING ALL-WHEEL DRIVE WITH CENTER LOCKING DIFFERENTIAL^{††}

is designed to help monitor road conditions, then distribute power to the appropriate wheels to enhance traction and control; for more challenging conditions, the Center Locking Differential^{††} can be engaged at the push of a button

DRIVE MODE SELECT WITH SNOW MODE^{††}

lets you choose from up to five modes, including Snow Mode,[†] which is available with AWD[†] models — plus Eco, Smart, Comfort, and Sport



*Optional feature available only on certain trims. See Features page for availability. †No system, no matter how advanced, can compensate for all driver errors and/or driving conditions. Always drive safely. Aftermarket all-terrain tires (sold separately) are recommended for off-road and snow conditions. SX PRESTIGE WITH X-LINE AWD PACKAGE SHOWN



TRACTION & STABILITY CONTROL[†]

include a Traction Control System,[†] Electronic Stability Control,[†] and Vehicle Stability Management,[†] which are designed to give you greater confidence on slippery roads

HILL-START ASSIST CONTROL[†]

is engineered to assist you by automatically holding the brake pressure for two seconds when you take your foot off the brake pedal

TORQUE VECTORING CORNERING CONTROL[†]

can help increase cornering stability by applying braking force to the front and rear inside-corner wheels, for more controlled turning in a variety of situations

DOWNHILL BRAKE CONTROL[†]

is designed to help you maintain your desired downhill speed, reducing the need to cycle between braking and accelerating

DEALER
ePROCESS

TAKE THE LONG WAY.

THE SORENTO TURBO-HYBRID REDEFINES THE HYBRID STATUS QUO WITH AN EXCEPTIONAL COMBINATION OF QUICK ACCELERATION, POWERFUL PERFORMANCE, IMPRESSIVE FUEL EFFICIENCY,² AVAILABLE TORQUE-VECTORING ALL-WHEEL DRIVE,³ AND ALL THE SPACE EXPECTED IN A THREE-ROW SUV.



*Optional feature available only on certain trims. See Features page for availability. †No system, no matter how advanced, can compensate for all driver errors and/or driving conditions. Always drive safely. 2, 5 See inside back cover for endnotes. HYBRID EX SHOWN

SORENTO HYBRID



TURBO / 227 HP
HYBRID POWERTRAIN COMBINED

227-HP TURBO-HYBRID POWERTRAIN pairs a turbocharged engine with the electric motor for a combined 227 hp and strong, seamless blending of power, along with split-second torque for fast acceleration

POWERFUL ELECTRIC MOTOR

called a Transmission-Mounted Electrical Device (TMED) allows both the gas engine and electric motor to simultaneously provide power directly to the wheels, for optimum efficiency

44.2 KW MOTOR POWER **HYBRID**



BATTERY

+



GASOLINE

=

655 MI

TOTAL RANGE (FWD)⁵

MILEAGE (EPA-ESTIMATED, FWD ONLY)²:

39 / 35 / 37

MPG CITY

MPG HWY

MPG COMBINED

SHIFT-BY-WIRE TRANSMISSION

uses cutting-edge transmission technology to provide fully electronic gear shifting via a convenient rotary dial



DEALER ePROCESS



COMPACT, ENERGY-DENSE BATTERY
is a 1.49 kWh lithium-ion polymer battery that's intelligently housed beneath the passenger seat to increase cabin space

REGENERATIVE BRAKING
captures a portion of the vehicle's kinetic energy when you're coasting or braking, which gets fed back into the battery to increase the charge level



DRIVE MODE SELECT WITH ECO MODE
is engineered to enhance efficiency by adjusting the throttle response, shift points, regenerative braking, and more



REAL-TIME EFFICIENCY INFO DISPLAY
on the 10.25-inch touch screen⁶ shows the hybrid energy generation and flow between the engine, battery, and regenerative braking

DO MORE WHILE USING LESS.

SORENTO HYBRID'S ADVANCED TECHNOLOGIES AND INNOVATIVE FEATURES HELP YOU GET THE MOST FROM EVERY ADVENTURE, MILE AFTER EFFICIENT MILE.²



^{2, 6} See inside back cover for endnotes. Simulated screen shown. HYBRID EX SHOWN

TELL LONGER TALES.

OUTSTANDING POWER, EXTENDED MILEAGE,³ AWD[†] CONFIDENCE — THE ALL-NEW PLUG-IN HYBRID (PHEV) GIVES YOU ALL THE GREAT QUALITIES OF SORENTO, PLUS MORE 2ND-ROW LEGROOM THAN ANY PLUG-IN HYBRID SUV⁴ AND THE LONGEST ALL-ELECTRIC RANGE OF ANY PLUG-IN HYBRID THREE-ROW SUV.⁷



*Optional feature available only on certain trims. See Features page for availability. †No system, no matter how advanced, can compensate for all driver errors and/or driving conditions. Always drive safely. 2-4, 7 See inside back cover for endnotes. PHEV SX PRESTIGE SHOWN

SORENTO PLUG-IN HYBRID



MILEAGE (EPA-ESTIMATED)²:

32 **35 / 33 / 79**

ALL-ELECTRIC RANGE (ON FULL CHARGE)³ MPG CITY (GAS) MPG HWY (GAS) MPGe COMBINED CITY/HWY (ELECTRIC + GAS)

MORE POWERFUL ELECTRIC MOTOR combined with the PHEV's higher-capacity battery results in greater horsepower, quick acceleration, and up to a 32-mile electric-only range on a full charge³

66.9 KW **PHEV**

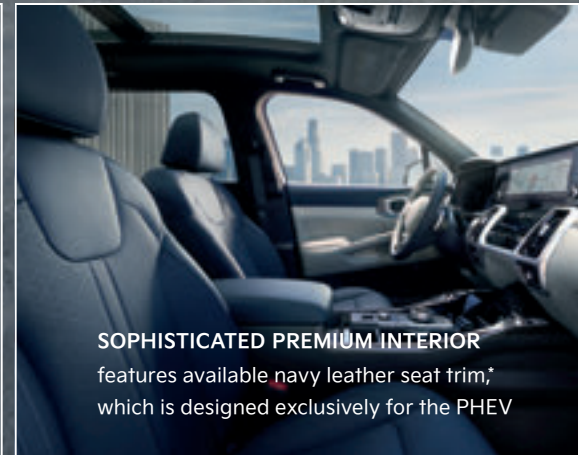
MOTOR EFFICIENCY



TURBO / 261 HP

PLUG-IN HYBRID POWERTRAIN COMBINED

261-HP TURBO PHEV POWERTRAIN supplies impressive power, courtesy of a hybrid-optimized turbocharged GDI engine paired with a powerful electric motor and potent battery



SOPHISTICATED PREMIUM INTERIOR features available navy leather seat trim,* which is designed exclusively for the PHEV

DEALER ePROCESS



REAL-TIME CHARGING INFO DISPLAY

shows your current, estimated electric range and can display a map of nearby charging stations, so you can make the most of EV Mode on the road

13.8 kWh LITHIUM-ION POLYMER BATTERY packs substantial energy density into its larger size to increase PHEV's all-electric driving range,³ so you can do your daily commute or run errands without using a drop of gas



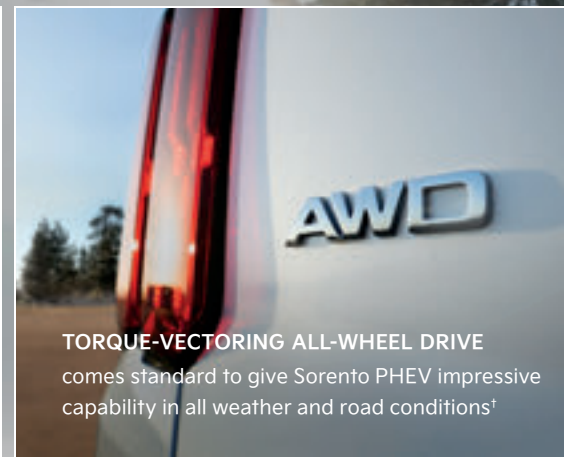
240V



120V

CHARGE TO FULL CAPACITY

in about 3 hours with a 240V power outlet, or about 10 hours at home with a standard household electrical outlet⁸

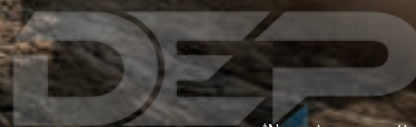


TORQUE-VECTORING ALL-WHEEL DRIVE

comes standard to give Sorento PHEV impressive capability in all weather and road conditions[†]

SUPERCHARGE YOUR ADVENTURE.

WITH ENHANCED TRACTION AND OFF-ROAD CAPABILITY, PLUS GREATER EFFICIENCY TO EXPLORE FARTHER, SORENTO PHEV IS THE PLUG-IN THAT PLAYS HARD.



[†]No system, no matter how advanced, can compensate for all driver errors and/or driving conditions. Always drive safely.
^{3, 8} See inside back cover for endnotes. Simulated screen shown. PHEV SX PRESTIGE SHOWN



EXPLORE FREELY.

WITH ABUNDANT SPACE, PREMIUM MATERIALS, CUSTOMIZABLE SEATING, AND AN AVAILABLE PANORAMIC SUNROOF* FOR THAT WIDE-OPEN FEELING, SORENTO'S MODERN, STYLISH CABIN OFFERS COMPLETE COMFORT FOR ALL.

*Optional feature available only on certain trims. See Features page for availability. † See inside back cover for endnote. Simulated screen shown. SX PRESTIGE WITH X-LINE AWD PACKAGE SHOWN

STANDARD 3RD-ROW SEATING

provides generous room for up to seven passengers, or six passengers if you choose the available captain's chairs

DRIVER'S INTEGRATED MEMORY SEAT*

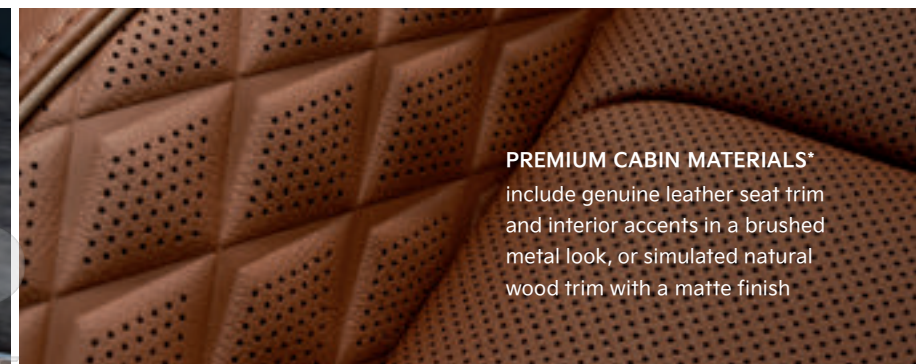
can be set to the preferred preset seat position and outside mirror settings for two drivers, at the push of a button

CAPTAIN'S CHAIRS*

covered in soft, high-quality leather or SynTex seat trim, plus available heated seats,† provide spacious luxury to 2nd-row passengers

HEATED & VENTILATED FRONT SEATS†*

have multiple settings to help keep you warm or cool for added comfort



PREMIUM CABIN MATERIALS*

include genuine leather seat trim and interior accents in a brushed metal look, or simulated natural wood trim with a matte finish

DEALER APPROVED



ADAPT AT WILL.

THE SPACIOUS, VERSATILE CARGO AREA IS DESIGNED FOR MULTIPLE CONFIGURATIONS, EASY ACCESS, AND ENDLESS ADVENTURE.

VERSATILE SEATING
courtesy of the 50/50 split-folding 3rd-row seat and your choice of a 60/40 split-folding 2nd-row bench seat or captain's chairs*

2ND-ROW ONE-TOUCH SLIDE-AND-FOLD SEAT
slides and folds forward at the touch of a button to give 3rd-row passengers easy access, and can even be folded down remotely from the cargo area

SMART POWER LIFTGATE*
opens automatically when you stand behind it with the Smart Key* in your pocket or bag, and can be customized to your preferred height and speed

DUAL-LEVEL CARGO FLOOR
aligns with the rear seats when folded down, or can be lowered to stow taller items¹ — beneath it all, a covered, concealed storage tray keeps lesser-used items from view

TRAILER PACKAGE*
comes standard on all 2.5L Turbo models and includes a trailer wiring harness, for up to 3,500 lbs. of towing capacity¹⁰

ROOF RAILS AT THE READY*
with a high-utility roof rack and an available crossbar system on the X-Line trim, and flush-style roof rails on S, EX, and SX trims¹



*Optional feature available only on certain trims. See Features page for availability. ¹All cargo should be evenly distributed, properly secured, and never piled higher than the seatback. Always use caution when carrying rooftop accessories. ¹⁰ See inside back cover for endnote. SX PRESTIGE WITH X-LINE AWD PACKAGE SHOWN

STEP UP YOUR SETUP.

CONVENIENCE AND CONTROL ARE TAKEN TO THE NEXT LEVEL IN SORENTO'S MODERN, HIGH-TECH COCKPIT.

12.3-INCH DIGITAL GAUGE CLUSTER* with ultra-high-resolution graphics, displays a range of vital information depending on drive mode (such as turn-by-turn navigation)

10.25-INCH TOUCH SCREEN WITH NAVIGATION SYSTEM^{6*} features high-resolution graphics and a triple split-screen mode

CAPACITIVE TOUCH CONTROLS* for the Navigation system⁶ and Dual Zone — Full Automatic Temperature Control* enhance the dashboard's clean, high-tech look

SMART KEY* allows you to lock/unlock the vehicle, start the engine,¹¹ and open/close the Smart Power Liftgate* — all without taking the Smart Key* out of your pocket or bag

REMOTE ENGINE START^{11*} lets you start the engine and automatically set the cabin to a predetermined temperature from outside the vehicle by pushing a button on the Smart Key*

*Optional feature available only on certain trims. See Features page for availability.
6, 11 See inside back cover for endnotes. Simulated screen shown. SX PRESTIGE SHOWN

DEALER ePROCESS

BOSE CENTERPOINT PREMIUM AUDIO SYSTEM^{12*}

includes 12 high-performance speakers and surround sound

USB CHARGE PORTS

help keep everyone's devices charged, with a total of eight* available USB charge ports throughout the cabin — including two that are conveniently integrated into the 2nd-row seatbacks for easy access

WIRELESS CONNECTIVITY*

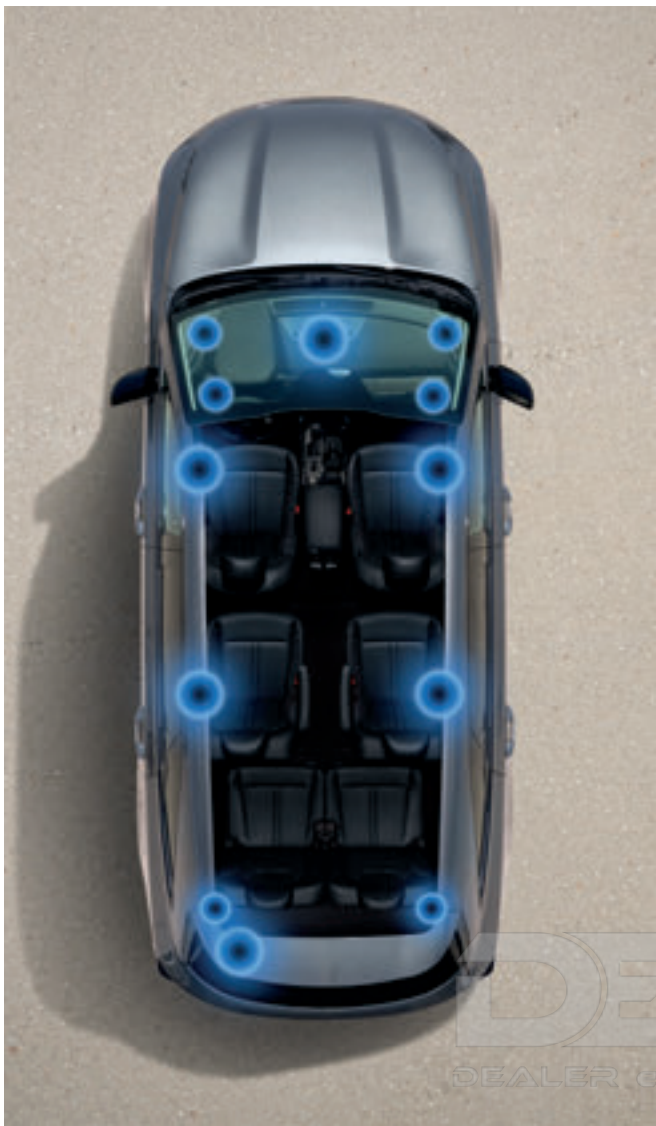
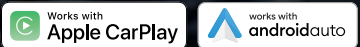
via standard *Bluetooth*¹³ technology with available multi-point connectivity,* along with a wireless smartphone charging pad^{14*} for faster charging

APPLE CarPlay¹⁵

integration comes standard, letting you connect to your iPhone wirelessly* or by plugging in, and offers an array of features like access to Apple Music, Maps, Siri, and more⁶

ANDROID AUTO¹⁶

works with compatible Android^{TM16} smartphones and comes standard as a plug-in or wireless feature, allowing hands-free⁶ access to your playlists, Google Maps,¹⁷ and more — just say "Hey Google" to get started¹⁷



APPLE CARPLAY¹⁵
ANDROID AUTO¹⁶
WIRELESS
SMARTPHONE CHARGER^{14*}
8 USB PORTS*
12.3" DIGITAL GAUGE CLUSTER*
BOSE¹² 12-SPEAKER
PREMIUM AUDIO*
10.25" TOUCH SCREEN^{6*}



*Optional feature available only on certain trims. See Features page for availability. 6, 12-17 See inside back cover for endnotes. Image shown for illustration only. Simulated screen shown. SX PRESTIGE WITH X-LINE AWD PACKAGE SHOWN

UVO | link

REMOTE START WITH CLIMATE CONTROL¹¹

works with the Kia Access with UVO link¹⁸ app to provide remote features such as starting the engine and turning on the AC/heat from outside the vehicle

FIND MY CAR WITH SURROUND VIEW MONITOR*

remotely captures 360-degree-view photos surrounding your vehicle through the Kia Access with UVO link¹⁸ app, allowing you to see the activity around your vehicle before you approach — it also automatically captures photos if the alarm is triggered

CONNECTED ROUTING*

uses real-time and historical traffic data to help determine the most efficient route to your requested destination, and can even show some speed cameras along the route and weather reports at your destination

UVO¹⁸ VOICE ASSIST⁶

with Natural Language Understanding lets you speak casually to control a variety of features by giving simple requests such as “turn on the A/C,” “defrost the windows,” or “turn on the seat heater”⁹

911 CONNECT^{19*} & ROADSIDE ASSISTANCE^{20*}

will automatically attempt to call 911 if your airbags deploy — or for non-emergencies, it can connect with 24/7 roadside assistance



UVO link¹⁸ & SMART SPEAKER INTEGRATION

allow you to utilize a nearby, paired Amazon Alexa²¹ - or Google Assistant¹⁷-enabled smart speaker or device to remotely control some functions (such as remote start¹¹) on your Kia with just your voice. To activate this feature, enable UVO Skill in the Amazon Alexa²¹ app or link the UVO Agent with the Google Assistant¹⁷ app on your compatible smartphone.

LET UVO link TAKE CARE OF THAT.

UVO link^{18*} IS KIA'S AVAILABLE SMART TELEMATICS SYSTEM THAT INTEGRATES WITH YOUR COMPATIBLE SMARTPHONE AND SMART SPEAKER VIA AN EMBEDDED MODEM TO HANDLE AN ARRAY OF CONVENIENT TASKS.

WE'LL COVER THE FIRST YEAR

of your UVO link¹⁸ subscription fees starting from the original purchase/lease date¹⁸ to help get you rolling

DOWNLOAD THE KIA ACCESS WITH UVO link¹⁸ APP

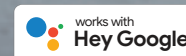
from the App Store^{®15} or Google Play^{™17} Store to make the most of UVO and its remote features¹¹



GO TO OWNERS.KIA.COM OR DOWNLOAD THE KIA ACCESS WITH UVO link APP TO ACTIVATE

*Optional feature available only on certain trims. See Features page for availability. 6, 9, 11, 15, 17-21 See inside back cover for endnotes. SX PRESTIGE SHOWN

DEALER ePROCESS



AVOID LIFE'S OBSTACLES.

SURROUND VIEW MONITOR²²

uses four cameras to provide an aerial view around the vehicle while parking



KIA DRIVE WISE^{22*} IS A SUITE OF STANDARD AND AVAILABLE ADVANCED DRIVER-ASSISTANCE TECHNOLOGIES THAT ARE DESIGNED TO HELP KEEP YOU ALERT, AWARE OF SURROUNDING TRAFFIC, AND EVEN INTERVENE IN CERTAIN SITUATIONS TO HELP YOU AVOID COLLISIONS.



FORWARD COLLISION-AVOIDANCE ASSIST WITH PEDESTRIAN DETECTION²²

can give visual and audible alerts and even automatically apply the brakes when the system detects a potential forward collision with a vehicle or person in front of you

FORWARD COLLISION-AVOIDANCE ASSIST WITH CYCLIST DETECTION & JUNCTION TURNING^{22*}

adds cyclist detection to the feature described above, and is also designed to detect oncoming vehicles in certain situations like making a left turn at an intersection



REAR CROSS-TRAFFIC COLLISION-AVOIDANCE ASSIST^{22*}

uses visual and audible alerts that can help warn of traffic coming from either side when you're in reverse, and can even automatically apply the brakes to help you avoid collisions

PARKING DISTANCE WARNING — FORWARD & REVERSE²²

can give visual and audible warnings if it detects certain objects close to the front and rear of your vehicle when parking

PARKING COLLISION-AVOIDANCE ASSIST — REVERSE^{22*}

is designed to enhance the above feature by adding the ability to apply the brakes when it detects an object or person close behind your vehicle

SAFE EXIT ASSIST²²

can alert driver and passengers when the system detects potential hazards approaching from behind when exiting the vehicle, and has an available active locking feature* that can automatically activate the power child locks until the hazard has passed

ULTRASONIC REAR OCCUPANT ALERT²³

is designed to remind you to check the rear seat for occupants at the end of your drive, plus alert you via your UVO link¹⁸ app if the sensor detects a rear occupant after you exit and lock the vehicle

*Optional features available only on certain trims. See Features page for availability. 18, 22, 23 See inside back cover for endnotes. Simulated screen shown. SX PRESTIGE SHOWN





BLIND-SPOT COLLISION-AVOIDANCE ASSIST WITH PARALLEL EXIT^{22*}

is designed to alert you when vehicles in your blind spot are detected, and in some cases, can even apply corrective braking to help you avoid some hazardous lane-change decisions or when exiting a parallel parking spot

BLIND-SPOT VIEW MONITOR^{22*}

activates within the instrument panel when you turn on the blinker to change lanes, to display the blind spot in the direction of your turn signal

LANE KEEPING ASSIST²²

can help alert you if it detects the vehicle getting close to visible lane markers, and apply corrective steering to help prevent you from drifting out of your marked lane

LANE FOLLOWING ASSIST²²

can provide a degree of automatic steering assist to help keep the vehicle centered in its lane by analyzing visible lane markings and information it detects from the vehicle ahead

TAKE EVERY ADVANTAGE.

KIA DRIVE WISE IS DESIGNED TO HELP KEEP YOU ON COURSE AMIDST EVERYDAY CHALLENGES SUCH AS VEHICLES IN YOUR BLIND SPOT, CHANGING LANES IN TRAFFIC, AND MORE²²

SMART CRUISE CONTROL WITH STOP & GO^{22*}

is engineered to help maintain a safe distance from the vehicle detected in front, by adjusting your driving speed, and in some cases, completely stopping and resuming again

NAVIGATION-BASED SMART CRUISE CONTROL — CURVE^{22*}

adds to Smart Cruise Control²² and is designed to adapt to changing speed limits and upcoming curves that it detects through the Sorento's available Navigation system^{6*}

HIGHWAY DRIVING ASSIST^{22*}

utilizes Smart Cruise Control²² and Lane Following Assist²² and is designed to adjust the speed to match the speed limit of selected federal highways that the system detects through the available Navigation system^{6*}

DRIVER ATTENTION WARNING WITH LEADING VEHICLE DEPARTURE ALERT²⁴

is designed to give you a warning signal to take a break if it detects inattentive driving practices, and also alert you when the vehicle ahead pulls away from a standstill

LED HEADLIGHTS WITH HIGH BEAM ASSIST²⁵

are engineered to automatically dim the headlights when an oncoming or leading vehicle is detected, then return to high beams when vehicles are no longer detected



*Optional feature available only on certain trims. See Features page for availability. 6, 22, 24, 25 See inside back cover for endnotes. Simulated screen shown. SX PRESTIGE SHOWN



GAS MODELS FEATURES

MECHANICAL & EXTERIOR

	LX	S	EX	SX	SX PRESTIGE
2.5L GDI 4-cylinder engine	●	●	—	—	—
2.5L Turbo GDI 4-cylinder engine	—	—	●	●	●
8-speed Automatic Transmission	●	●	—	—	—
8-speed Dual-Clutch Transmission	—	—	●	●	●
Torque-vectoring all-wheel drive w/Center Locking Differential	○	○	○	○	○
Torque Vectoring Cornering Control	○	○	○	○	○
17-in. alloy wheels	●	—	—	—	—
18-in. alloy wheels	—	●	●	—	—
20-in. alloy wheels	—	—	○	●	●
Drive Mode Select	●	●	●	●	●
Drive Mode Select w/Snow Mode	○	○	○	○	○
Idle Stop & Go	●	●	●	●	●
Trailer Package (3,500-lb. capacity) ¹⁰	—	—	●	●	●
Panoramic sunroof w/LED interior lighting	—	○	○	●	●
LED reflector headlights	●	●	●	—	—
LED projector headlights	—	—	—	●	●
LED light signature	—	—	—	●	●
LED fog lights	—	—	●	●	●
LED combination tail lights	—	—	—	●	●
X-Line Package	—	○	○	—	○
Roof rails	—	●	●	●	●
High-utility roof rack	—	○	○	—	○
Power-folding exterior mirrors	—	—	—	—	—

INTERIOR & CONVENIENCE

	LX	S	EX	SX	SX PRESTIGE
8-in. touch screen ⁶ w/Bluetooth ^{®13} wireless technology	●	—	—	—	—
10.25-in. touch screen ⁶ w/multi-phone Bluetooth ^{®13} wireless technology & Navigation ⁶	—	●	●	●	●
4.2-in. color Supervision meter cluster	●	●	●	●	—
12.3-in. reconfigurable, color Supervision meter cluster	—	—	—	—	●
6-speaker AM/FM HD audio system	●	●	●	●	—
Bose ¹² 12-speaker Centerpoint premium audio system	—	—	—	—	●
UVO link ¹⁸	—	●	●	●	●
SiriusXM ^{®26} w/3-month All Access trial	—	●	●	●	●
Apple CarPlay ^{®15}	●	●	●	●	●
Android Auto ^{™16}	●	●	●	●	●
6 USB charging ports	●	—	—	—	—
8 USB charging ports	—	●	●	●	●
Wireless smartphone charger ¹⁴	—	—	●	●	●
Electrochromic rearview mirror	—	—	—	—	●
Push Button Start w/Smart Key	—	●	●	●	●
Remote Engine Start ¹¹ (on key fob)	—	●	●	●	●
Electronic Parking Brake	—	—	●	●	●
Heated steering wheel ⁹	—	—	—	—	●
Dual Zone — Full Automatic Temperature Control	—	●	●	●	●
Ultrasonic Rear Occupant Alert ²³ (Sensor)	●	●	●	●	●
12V power outlets x2	●	●	●	●	●
Smart Power Liftgate	—	—	●	●	●

KIA DRIVE WISE²²

	LX	S	EX	SX	SX PRESTIGE
Forward Collision-Avoidance Assist w/Pedestrian Detection ²²	●	●	—	—	—
Forward Collision-Avoidance Assist w/Cyclist Detection & Junction Turning ²²	—	—	●	●	●
Driver Attention Warning w/Leading Vehicle Departure Alert ²⁴	●	●	●	●	●
Intelligent Speed Limit Assist ²²	●	●	●	●	●
Lane Departure Warning ²²	●	●	●	●	●
Lane Keeping Assist ²²	●	●	●	●	●
Lane Following Assist ²²	●	●	●	●	●
High Beam Assist ²⁵	●	●	●	●	●
Safe Exit Assist ²²	—	●	●	●	●
Rear View Monitor w/Parking Guidance ²²	●	●	●	●	●
Blind-Spot Collision-Avoidance Assist w/Parallel Exit ²²	—	●	●	●	●
Rear Cross-Traffic Collision-Avoidance Assist ²²	—	●	●	●	●
Parking Distance Warning — Reverse ²²	—	●	●	●	—
Parking Distance Warning — Forward & Reverse ²²	—	—	—	—	●
Parking Collision-Avoidance Assist — Reverse ²²	—	—	—	—	●
Navigation-based Smart Cruise Control w/Stop & Go ²²	—	—	●	●	●
Highway Driving Assist ²²	—	—	●	●	●
Surround View Monitor ²²	—	—	—	—	●
Blind-Spot View Monitor ²²	—	—	—	—	●

SEATING & TRIM

	LX	S	EX	SX	SX PRESTIGE
Cloth seat trim	●	—	—	—	—
SynTex seat trim	—	●	●	●	—
3D-embossed leather seat trim	—	—	—	—	●
10-way power-adjustable driver's seat	—	●	●	●	—
14-way power-adjustable driver's seat w/4-way lumbar support & thigh extension	—	—	—	—	●
8-way power-adjustable front passenger's seat	—	—	—	●	—
10-way power-adjustable front passenger's seat	—	—	—	—	●
Driver's integrated memory seat	—	—	—	—	●
Heated front seats ⁹	—	●	●	●	●
2nd-row heated captain's chairs ⁹	—	—	—	—	●
Ventilated front seats	—	—	—	—	●
60/40 split-folding, 2nd-row bench seat (7-passenger)	●	●	—	—	—
50/50 split-folding, 2nd-row captain's chairs (6-passenger)	—	—	●	●	●
50/50 split-folding, 3rd-row bench seat	●	●	●	●	●
Simulated matte wood inlays	—	○	●	—	○
Simulated brushed metal inlays	—	—	—	●	●
Cloth-wrapped A & B pillars	—	—	—	—	●
Dual-level cargo floor	●	●	●	●	●

SAFETY²⁷

Dual front advanced airbags	●	●	●	●	●
Dual front seat-mounted side airbags	●	●	●	●	●
Full-length side curtain airbags	●	●	●	●	●
Driver's side knee airbag	●	●	●	●	●
Electronic Stability Control	●	●	●	●	●
Vehicle Stability Management	●	●	●	●	●
Hill-start Assist Control	●	●	●	●	●
Downhill Brake Control	●	●	●	●	●



HEV MODELS FEATURES

HYBRID S
HYBRID EX
PHEV SX
PHEV SX PRESTIGE

MECHANICAL & EXTERIOR

1.6L Turbo GDI 4-cylinder engine w/44.2 kW motor + 1.49 kWh battery	●	●	—	—
1.6L Turbo GDI 4-cylinder engine w/66.9 kW motor + 13.8 kWh battery	—	—	●	●
6-speed Shift-by-Wire Automatic Transmission	●	●	●	●
Torque-vectoring all-wheel drive w/Center Locking Differential	○	○	●	●
Torque Vectoring Cornering Control	○	○	●	●
17-in. alloy wheels	●	†	—	—
19-in. alloy wheels	—	‡	●	●
Drive Mode Select	●	●	●	●
Drive Mode Select w/Snow Mode	○	○	●	●
Idle Stop & Go	●	●	●	●
Panoramic sunroof w/LED interior lighting	—	○	○	○
LED reflector headlights	●	●	—	—
LED projector headlights	—	—	●	●
LED light signature	—	—	●	●
LED fog lights	—	●	●	●
LED combination tail lights	—	—	●	●
Roof rails	●	●	●	●
Power-folding exterior mirrors	—	—	—	●

INTERIOR & CONVENIENCE

10.25-in. touch screen ⁶ w/multi-phone Bluetooth ^{®13} wireless technology & Navigation ⁶	●	●	●	●
4.2-in. color Supervision meter cluster	●	●	●	—
12.3-in. reconfigurable, color Supervision meter cluster	—	—	—	●
6-speaker AM/FM HD audio system	●	●	●	—
Bose ¹² 12-speaker Centerpoint premium audio system	—	—	—	●
UVO link ¹⁸	●	●	●	●
SiriusXM ^{®26} w/3-month All Access trial	●	●	●	●
Apple CarPlay ^{®15}	●	●	●	●
Android Auto ^{™16}	●	●	●	●
8 USB charging ports	●	●	●	●
Wireless smartphone charger ¹⁴	—	●	●	●
Electrochromic rearview mirror	—	—	—	●
Push Button Start w/Smart Key	●	●	●	●
Remote Engine Start ¹¹ (on key fob)	●	●	●	●
Electronic Parking Brake	●	●	●	●
Heated steering wheel ⁹	—	—	—	●
Dual Zone — Full Automatic Temperature Control	●	●	●	●
Ultrasonic Rear Occupant Alert ²³ (Sensor)	●	●	●	●
12V power outlets x2	●	●	●	●
Smart Power Liftgate	—	●	●	●

HYBRID S
HYBRID EX
PHEV SX
PHEV SX PRESTIGE

KIA DRIVE WISE²²

Forward Collision-Avoidance Assist w/Pedestrian Detection ²²	●	—	—	—
Forward Collision-Avoidance Assist w/Cyclist Detection & Junction Turning ²²	—	●	●	●
Driver Attention Warning w/Leading Vehicle Departure Alert ²⁴	●	●	●	●
Intelligent Speed Limit Assist ²²	●	●	●	●
Lane Departure Warning ²²	●	●	●	●
Lane Keeping Assist ²²	●	●	●	●
Lane Following Assist ²²	●	●	●	●
High Beam Assist ²⁵	●	●	●	●
Safe Exit Assist ²²	●	●	●	●
Rear View Monitor w/Parking Guidance ²²	●	●	●	●
Blind-Spot Collision-Avoidance Assist w/Parallel Exit ²²	●	●	●	●
Rear Cross-Traffic Collision-Avoidance Assist ²²	●	●	●	●
Parking Distance Warning — Reverse ²²	●	—	—	—
Parking Distance Warning — Forward & Reverse ²²	—	●	●	●
Parking Collision-Avoidance Assist — Reverse ²²	—	—	—	●
Navigation-based Smart Cruise Control w/Stop & Go ²²	—	●	●	●
Highway Driving Assist ²²	—	●	●	●
Surround View Monitor ²²	—	—	—	●
Blind-Spot View Monitor ²²	—	—	—	●

HYBRID S
HYBRID EX
PHEV SX
PHEV SX PRESTIGE

SEATING & TRIM

SynTex seat trim	●	●	●	—
Leather seat trim	—	—	—	●
10-way power-adjustable driver's seat	●	●	●	—
14-way power-adjustable driver's seat w/4-way lumbar support & thigh extension	—	—	—	●
8-way power-adjustable front passenger's seat	—	—	●	—
10-way power-adjustable front passenger's seat	—	—	—	●
Driver's integrated memory seat	—	—	—	●
Heated front seats ⁹	●	●	●	●
2nd-row heated captain's chairs ⁹	—	—	—	●
Ventilated front seats	—	—	—	●
50/50 split-folding, 2nd-row captain's chairs (6-passenger)	●	●	●	●
50/50 split-folding, 3rd-row bench seat	●	●	●	●
Simulated brushed metal inlays	—	—	●	●
Cloth-wrapped A & B pillars	—	—	—	●
Dual-level cargo floor	●	●	●	●

HYBRID S
HYBRID EX
PHEV SX
PHEV SX PRESTIGE

SAFETY²⁷

Dual front advanced airbags	●	●	●	●
Dual front seat-mounted side airbags	●	●	●	●
Full-length side curtain airbags	●	●	●	●
Driver's side knee airbag	●	●	●	●
Electronic Stability Control	●	●	●	●
Vehicle Stability Management	●	●	●	●
Hill-start Assist Control	●	●	●	●
Downhill Brake Control	●	●	●	●



¹FWD only, [†]AWD only, 6, 9, 11-16, 18, 22-27 See inside back cover for endnotes. ● = Standard ○ = Optional — = Not available

SPECIFICATIONS

ENGINE				
Type	2.5L 4-cylinder	2.5L Turbo 4-cylinder	1.6L Turbo 4-cylinder	1.6L Turbo 4-cylinder (PHEV)
Valve gear	DOHC w/Dual CVVT	DOHC w/Dual CVVT	DOHC w/Dual CVVD	DOHC w/Dual CVVD
Horsepower	191 hp @ 6,100 rpm	281 hp @ 5,800 rpm	227 hp combined	261 hp combined
Torque	181 lb.-ft. @ 4,000 rpm	311 lb.-ft. @ 1,700 rpm	258 lb.-ft. combined	258 lb.-ft. combined
Electric motor			44.2 kW	66.9 kW
Battery			1.49 kWh	13.8 kWh
Transmission	8-speed Automatic Transmission	8-speed Dual-Clutch Transmission	6-speed Automatic Transmission	6-speed Automatic Transmission
AWD	Torque-vectoring all-wheel drive w/Center Locking Differential (optional)	Torque-vectoring all-wheel drive w/Center Locking Differential (optional)	Torque-vectoring all-wheel drive w/Center Locking Differential (optional)	Torque-vectoring all-wheel drive w/Center Locking Differential
Towing capacity ¹⁰	2,000 lb.	3,500 lb.	2,000 lb.	2,000 lb.

BODY & CHASSIS	
Body type	Steel unibody w/Iso-Structure™ construction
Front suspension	Independent, MacPherson struts, coil springs, stabilizer bar
Rear suspension	Independent, multi-link, coil springs, stabilizer bar

TIRES & BRAKES	
Tire size	235/65R17 (LX, Hybrid S, Hybrid EX FWD), 235/60R18 (S, EX FWD), 235/55R19 (HEV EX, PHEV SX, PHEV SX Prestige), 255/45R20 (EX AWD, SX, SX Prestige)
Brakes (front/rear)	12.8-in. ventilated disc/12.0-in. ventilated disc (LX, S, EX, SX, SX Prestige), 12.8-in. ventilated disc/12.8-in. ventilated disc (Hybrid S, Hybrid EX, PHEV SX, PHEV SX Prestige)

DIMENSIONS	
Wheelbase	110.8 in.
Track (front/rear)	65.0 in./65.4 in. (LX, Hybrid S, Hybrid EX), 64.8 in./65.2 in. (S, EX, Hybrid EX, PHEV SX, PHEV SX Prestige), 64.5 in./64.8 in. (EX w/X-Line AWD Package, SX, SX Prestige)
Length	189.0 in. (LX, S w/X-Line AWD Package, EX w/X-Line AWD Package, SX Prestige w/X-Line AWD Package), 189.4 in. (S, Hybrid S, EX, Hybrid EX, SX, SX Prestige FWD, PHEV SX, PHEV SX Prestige)
Width	74.8 in.
Height	66.7 in. (FWD, Hybrid, PHEV), 67.7 in. (AWD), 70.3 in. (X-Line AWD Package)
Headroom (front/2nd row/3rd row)	40.3 in./39.1 in./36.8 in. 38.7 in./37.9 in./36.8 in. (w/panoramic sunroof)
Shoulder room (front/2nd row/3rd row)	59.1 in./58.1 in./53.0 in.
Legroom (front/2nd row/3rd row)	41.4 in./41.7 in. (40.7 in. on Hybrid S, Hybrid EX; 40.3 in. on PHEV SX, PHEV SX Prestige)/29.6 in.
Cargo volume (behind 1st row/2nd row/3rd row)	75.5 cu. ft./38.5-45.0 cu. ft./12.6 cu. ft.

SPECIFICATIONS

2022 EPA-ESTIMATED FUEL ECONOMY ²				
	2.5L FWD	2.5L AWD	2.5T FWD	2.5T AWD
City/Highway/Combined MPG	24/29/26	23/25/24	22/29/25	22/27/24
Fuel tank capacity (gallons)	17.7	17.7	17.7	17.7
	1.6T HYBRID	1.6T HYBRID AWD (S)	1.6T HYBRID AWD (EX)	1.6T PHEV AWD
City/Highway/Combined MPG	39/35/37	37/34/36	36/33/34	35/33/79 (MPGe)
Fuel tank capacity (gallons)	17.7	17.7	17.7	12.4

TRIM OPTIONS AND PACKAGES

AWD	X-LINE AWD
(LX, SX, & Hybrid S, Hybrid EX)	(S, EX, & SX Prestige only)
Torque-vectoring all-wheel drive w/Center Locking Differential	Torque-vectoring all-wheel drive w/Center Locking Differential
Drive Mode Select w/Snow Mode	Drive Mode Select w/Snow Mode
	20-in. matte gray wheels (18-in. gloss black on S)
	"X-Line" front & rear bumpers w/Hyper Silver inserts
	Matte black exterior trim
	Dark Hyper Silver grille
	Bridge-type roof rack
	Simulated matte wood inlays
	Rust leather color package (optional on SX Prestige only)
	Panoramic sunroof w/LED interior lighting (standard on EX & SX Prestige, optional on S)

PANORAMIC SUNROOF PACKAGE

Panoramic sunroof w/LED interior lighting
Power-retractable sunshade

The content in this brochure is based upon information available at the time of printing and is subject to change without notice. Kia America, Inc. makes no guarantees or warranties, either expressed or implied, with respect to the accuracy of the content presented. Please see kia.com for the most up-to-date vehicle information. Vehicles shown include optional equipment, and video and camera screens are simulated. See your Kia retailer or kia.com for details on Kia's available limited warranties. ©2021 Kia America, Inc. Reproductions of this material are prohibited without the expressed written approval of Kia America, Inc.

EXTERIOR COLORS



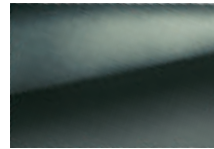
SAPPHIRE BLUE
(S, EX, SX, SX PRESTIGE¹)



PASSION RED TINTCOAT
(LX, S, EX, SX, SX PRESTIGE¹)



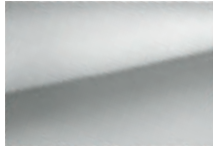
WOLF GRAY
(S, EX, SX, SX PRESTIGE)



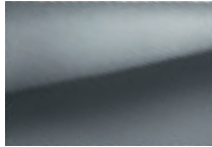
ARUBA GREEN
(X-LINE PACKAGE ONLY)



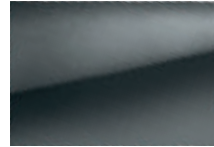
GLACIAL WHITE PEARL
(LX, S, EX, SX, SX PRESTIGE)



SPARKLING SILVER
(LX, S, EX, SX, SX PRESTIGE)



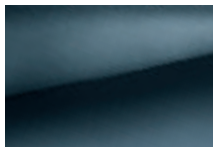
EVERLASTING SILVER
(LX, S, EX, SX, SX PRESTIGE)



GRAVITY GRAY
(LX, S, EX, SX, SX PRESTIGE)



EBONY BLACK
(LX, S, EX, SX, SX PRESTIGE)



GRAVITY BLUE
(HYBRID S & EX, PHEV SX & SX PRESTIGE)



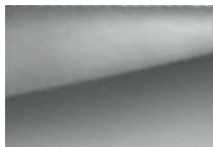
RUNWAY RED
(HYBRID S & EX, PHEV SX & SX PRESTIGE)



SNOW WHITE PEARL
(HYBRID S & EX, PHEV SX & SX PRESTIGE)



SILKY SILVER
(HYBRID S & EX, PHEV SX & SX PRESTIGE)



STEEL GRAY
(HYBRID S & EX, PHEV SX & SX PRESTIGE)

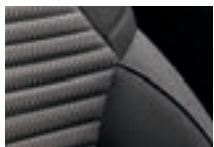


PLATINUM GRAPHITE
(HYBRID S & EX, PHEV SX & SX PRESTIGE)



AURORA BLACK
(HYBRID S & EX, PHEV SX & SX PRESTIGE)

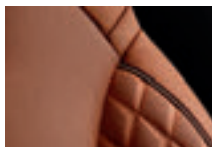
INTERIOR COLORS



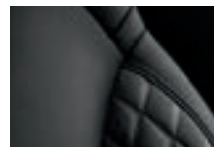
BLACK CLOTH
(LX)



GRAY LEATHER
(SX PRESTIGE¹)



RUST LEATHER
(X-LINE SX PRESTIGE ONLY)



BLACK LEATHER
(SX PRESTIGE)



BLACK SYNTEX
(S, EX, SX, HYBRID S & EX, PHEV SX)



GRAY SYNTEX
(S, EX, SX, HYBRID S & EX, PHEV SX)



GRAY LEATHER
(PHEV SX PRESTIGE)



NAVY LEATHER
(PHEV SX PRESTIGE)

Actual colors may vary from printed brochure. See kia.com/sorento for interior combinations.
¹FWD only. *S X-Line Package only.

ENDNOTES

1. Warranties include 10-year/100,000-mile powertrain and 5-year/60,000-mile basic. All warranties and roadside assistance are limited. See retailer for warranty details. 2. Based on EPA estimates (for MPGe, on a full battery charge). Actual mileage will vary with options, driving conditions, driving habits, and your vehicle's condition (and for PHEV, charging practice, battery age, weather, and temperature). 3. Based on EPA estimates (based on a full battery for PHEV). Actual mileage or range will vary with options, driving conditions, driving habits, vehicle maintenance, and your vehicle's condition. For PHEV, it's also based on charging practice, battery age, weather, and temperature. Battery capacity will decrease with time and use. For more information on range, please see www.fueleconomy.gov. 4. Based on comparisons of available plug-in hybrid SUVs, using manufacturer-supplied data, as of May 2021. 5. For FWD model. Range calculated by using full fuel tank capacity and 2022 combined MPG estimate provided to EPA. Range claim is not a warranty or guarantee. Actual distance may vary with options, driving conditions, driving habits, and vehicle condition. 6. Distracted driving can result in a loss of vehicle control. When operating a vehicle, never use a handheld device or vehicle system that takes your focus away from safe vehicle operation. Navigation is for information purposes only, and Kia does not make any warranties about the accuracy of the information. 7. Based on EPA estimates for all-electric operation on a full battery charge. Comparison based on plug-in hybrid three-row SUVs available as of May 2021. Actual range will vary with options, driving conditions, driving habits, vehicle maintenance, charging practice, battery age, weather, temperature, and your vehicle's condition. Battery capacity will decrease with time and use. 8. Charge time is based on 77 degrees Fahrenheit battery temperature and under 10% battery state of charge, with the following power requirements: Level 2 charger rated at 40 amps using a 240V source; standard household outlet rated at 15 amps using a 120V source. Battery capacity will decrease with time and use. Please check your local building codes and guidelines for installation of a Level 2 charger. 9. Use extreme caution when using seat warmers or heated steering wheel to avoid burns. Refer to the Owner's Manual for more safety information. 10. Towing requires additional equipment. See Owner's Manual for towing capacity, and additional information and warnings. 11. Remote features require a UVO subscription, a compatible smartphone, and a wireless signal with good coverage to function. Normal cellular service rates may apply. Do not use remote climate control if vehicle is in an enclosed area (e.g., closed garage) or a partially enclosed area without ventilation. Close all doors leading from adjacent living areas to the vehicle area before executing a remote climate control command. If any door or hatch is not closed properly, the remote lock and unlock functions will not work. 12. Bose is a registered trademark of Bose Corporation. 13. The *Bluetooth*® word mark and logos are registered trademarks owned by Bluetooth SIG Inc., and any use of such marks by Kia is under license. A compatible *Bluetooth*®-enabled cell phone is required to use *Bluetooth*® wireless technology. 14. Charging system only works with select devices. Refer to the vehicle's Owner's Manual for warnings and instructions. 15. Apple, the Apple logo, App Store, Apple CarPlay, and iPhone are trademarks of Apple Inc., registered in the U.S. and other countries. 16. Vehicle user interface is a product of Google and its terms and privacy statements apply. Requires an Android phone running Android 5.0 or higher, an active data plan, and the Android Auto app. 17. Google devices are sold separately and require a Wi-Fi internet connection. Google, Android, Google Play, Android Auto, and other marks are trademarks of Google LLC. 18. Purchase/lease of certain 2022 and newer Kia vehicles with UVO link includes a complimentary 1-year subscription starting from new vehicle retail sale/lease date as recorded by the dealer. After your complimentary 1-year UVO link subscription expires, continued access to the full suite of UVO link services available on your Kia will require a paid subscription at the then-current subscription rate or your use of certain UVO link features may immediately terminate. Use of UVO is subject to agreement to the UVO Privacy Policy (available at owners.kia.com/us/en/privacy-policy.html) and Terms of Service (available at owners.kia.com/us/en/terms-of-service.html). UVO link is transferable to subsequent owner during the original UVO link service term. Only use UVO link when safe to do so. Kia Access with UVO link app is available from the Apple® App Store® or Google Play™ Store. Kia America, Inc. reserves the right to change or discontinue UVO link at any time without prior notification or incurring any future obligation. Message and data rates may apply. Cellular and GPS coverage are required to use most features. UVO link features may vary by model, model year, and trim level. Features, specifications, and fees are subject to change. UVO link may be currently unavailable for Model Year 2022 and newer vehicles sold in Massachusetts; please see www.owners.kia.com for updates on availability. For more on details and limitations, visit www.kia.com or your authorized Kia dealer. Apple and App Store are registered trademarks of Apple Inc. Google and logos are trademarks of Google LLC. 19. 911 Connect must be enabled on head unit, and activates after airbag deployment. Requires a wireless signal with good coverage to function. 20. 24-hour Roadside Assistance is a service plan provided by Kia America, Inc. Limitations apply. See Kia Warranty and Consumer Information Manual for details. Requires cellular coverage. 21. Amazon devices are sold separately and require a Wi-Fi internet connection. Amazon, Alexa, and all related logos are trademarks of Amazon.com, Inc. or its affiliates. 22. These features are not substitutes for safe driving and may not detect all objects surrounding vehicle. Always drive safely and use caution. 23. This system is not a substitute for one's attention. Always check the vehicle interior when exiting the vehicle. 24. Driver Attention Warning is not a substitute for safe driving and may not detect all instances of inattentive driving practices. Failure to pay attention to travel conditions and vehicle operation could result in loss of vehicle control. Always drive safely and use caution. 25. High Beam Assist does not operate below certain speeds, or in some lighting and driving conditions. Please be aware of your surroundings and exercise proper road etiquette when operating a vehicle using the high beams. 26. SiriusXM® audio and data services each require a subscription. Subscriptions are sold separately, or as a package, by Sirius XM Radio Inc. If you decide to continue service after your 3-month All Access trial subscription expires, which is included with your newly purchased or leased vehicle, the subscription plan you choose will automatically renew thereafter and you will be charged according to your chosen payment method at then-current rates. Fees and taxes apply. See SiriusXM's Customer Agreement at www.siriusxm.com for complete terms and how to cancel, which includes calling SiriusXM at 1-866-635-2349. All fees and programming subject to change. Traffic information not available in all markets. See siriusxm.com/traffic for details. Sirius, XM, SiriusXM, Pandora, and all related marks and logos are trademarks of Sirius XM Radio Inc. Satellite and streaming lineups may vary slightly. 27. For maximum protection, always wear your seat belt. No system, no matter how advanced, can compensate for all driver errors, driving conditions, and/or injury.